

# We need your input for the Euclid Creek Watershed Plan!



**EUCLID CREEK  
WATERSHED COUNCIL**

BEACHWOOD • CLEVELAND • EUCLID  
HIGHLAND HEIGHTS • LYNDHURST • MAYFIELD  
MAYFIELD HEIGHTS • RICHMOND HEIGHTS • SOUTH EUCLID



This area includes portions of the following communities:

Beachwood, Cleveland, Euclid, Highland Heights, Lyndhurst, Mayfield, Mayfield Heights, Pepper Pike, Richmond Heights, Shaker Heights, South Euclid, and Willoughby Hills

**Open houses are from 6:30 to 8:30 p.m. with a short presentation at 7:00 pm.**

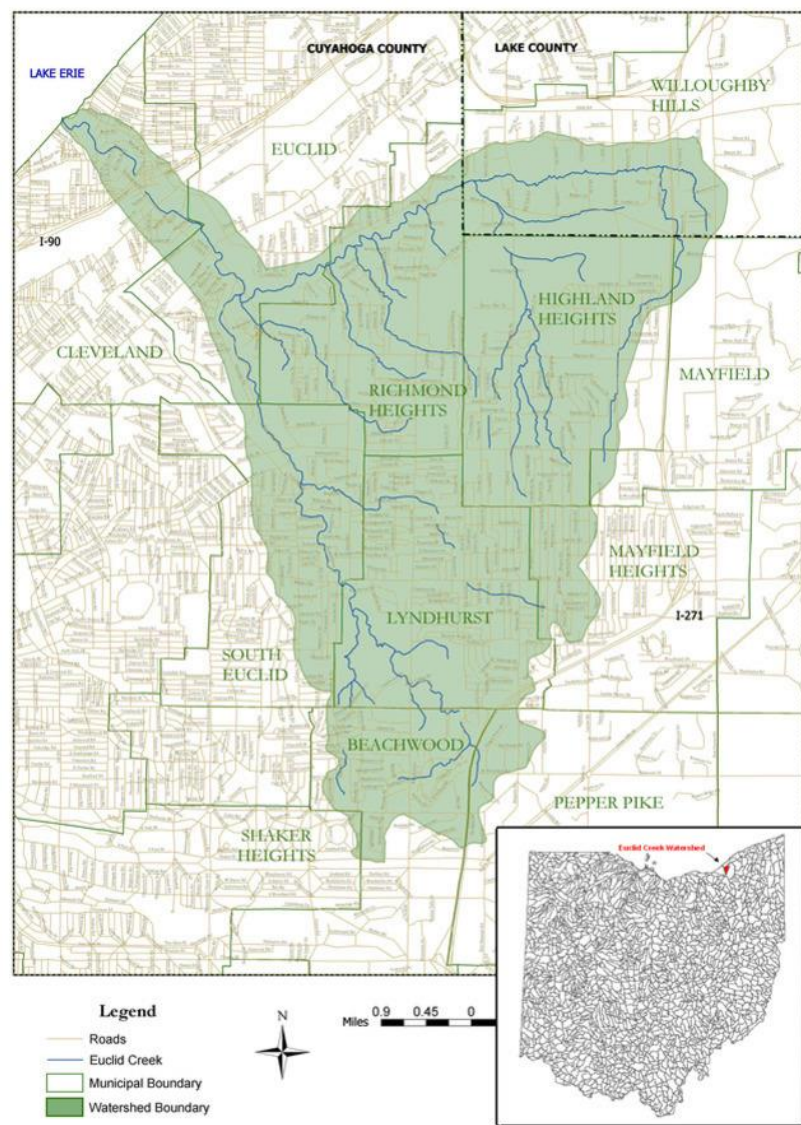
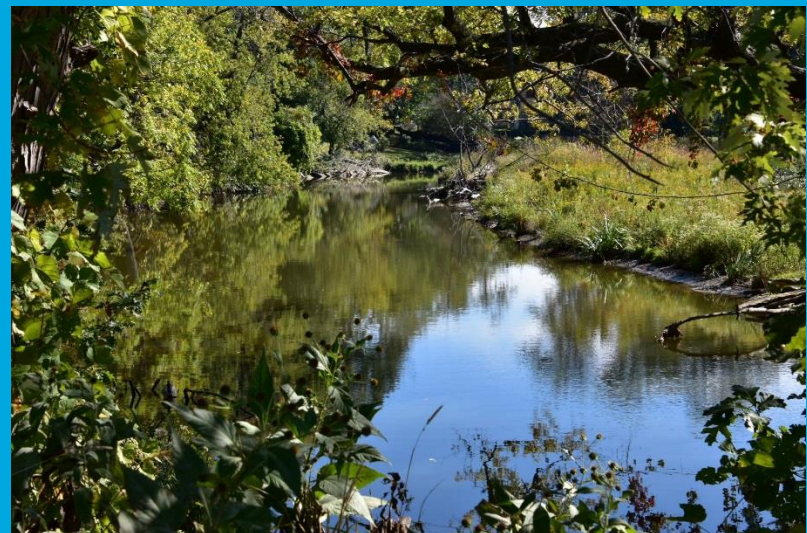
Thursday, December 6, 2018 Mayfield Library

Monday, December 10, 2018 Beachwood Community Center

**We are seeking input on the following:**

- ❖ Eroding sections of streams
- ❖ Areas for improved management of stormwater and flooding
- ❖ Areas to protect for public greenspace and wildlife habitat

Euclid Creek watershed includes 40+ miles of stream, 30 miles of which is open channel and 10 miles of which is culverted or buried that drain directly to Lake Erie.



Anyone may provide input by emailing [ehiser@cuyahogawcd.org](mailto:ehiser@cuyahogawcd.org) or attending a public meeting. Please RSVP by calling Elizabeth Hiser at 216-524-6580 x1002 or emailing [ehiser@cuyahogawcd.org](mailto:ehiser@cuyahogawcd.org)